

# Гоблени "ЛЕВРОН"



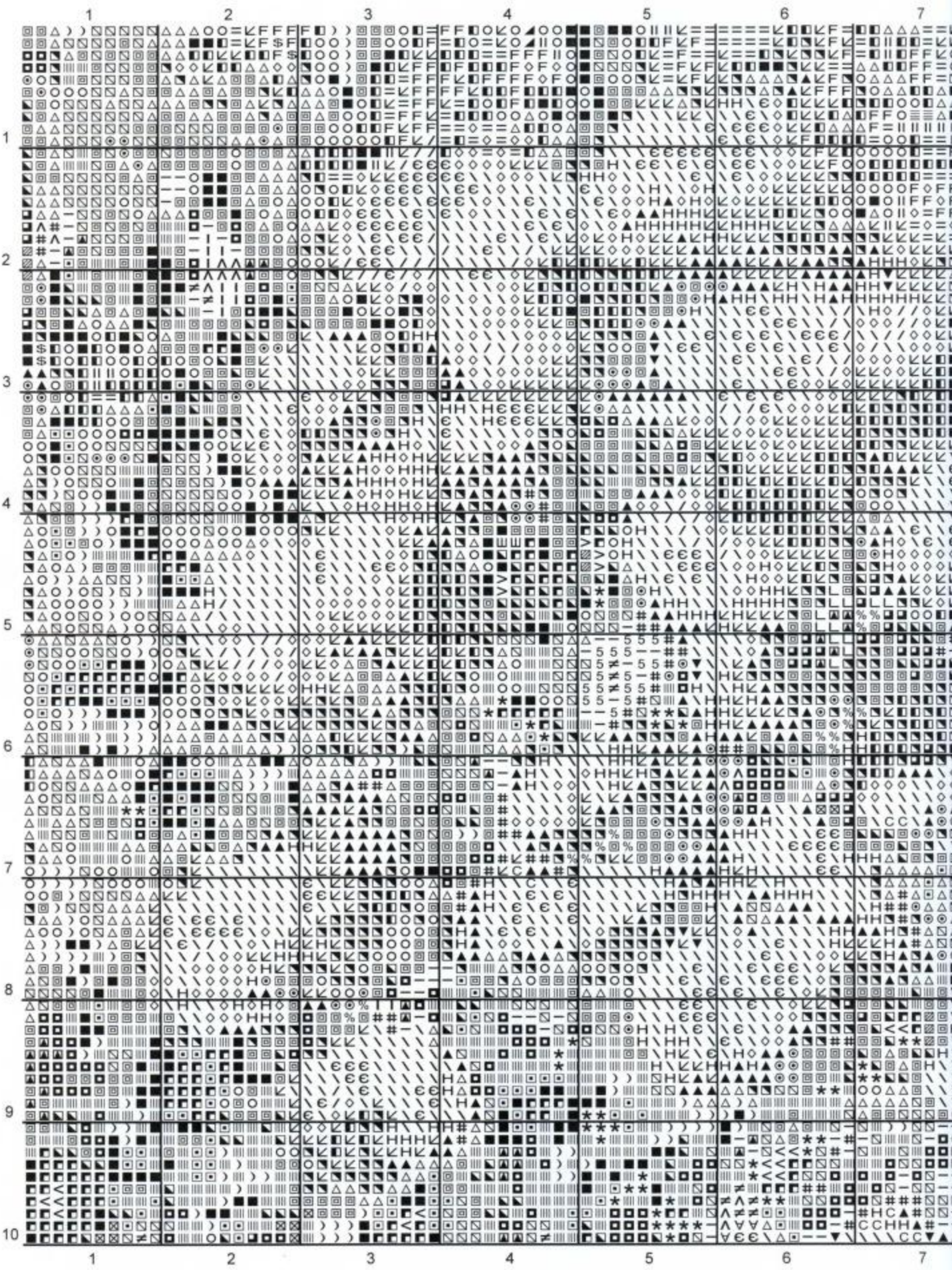
Вдъхновение и нежност - DMC

1:1 37 / 25.9 см

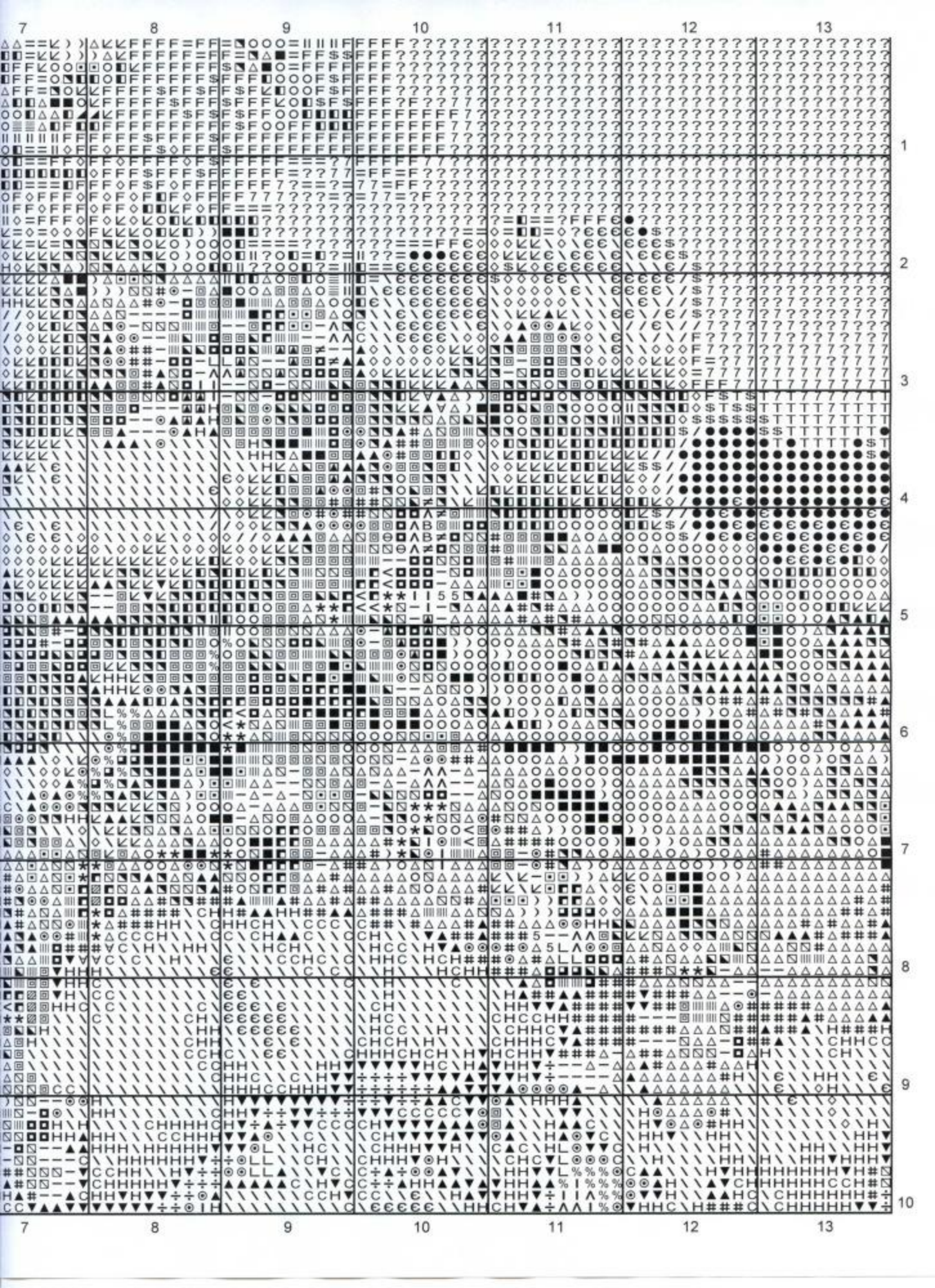
611	869	3863	898	839	3371	645
9.32 m.	12.41 m.	7.4 m.	5.72 m.	6.82 m.	3.92 m.	3.81 m.
372	646	640	3032	732 (731)	647	780
8.8 m.	5.69 m.	7.31 m.	6.55 m.	14.01 m.	4.42 m.	14.73 m.
730	844	520	300	349	3023	934
6.1 m.	3.67 m.	6.66 m.	5.72 m.	2.38 m.	6.43 m.	5.91 m.
3064	3772	3858	435	167	436	3752
4.74 m.	6.99 m.	3.28 m.	4.38 m.	4.74 m.	5.89 m.	8.69 m.
3346	890	831	154	931	160	3826
3.64 m.	5.05 m.	3.25 m.	0.51 m.	2.79 m.	7.42 m.	5.76 m.
739	3024	ECRU	842	3743	975	809
7 m.	5.3 m.	4.51 m.	9.26 m.	2.82 m.	3.71 m.	9.86 m.
581	939	676	738	782 (781)	437	924
4.23 m.	2.57 m.	3.21 m.	6.7 m.	2.51 m.	6.27 m.	1.18 m.
498	3768	922	783	720	3820	519
3.79 m.	3.89 m.	2.32 m.	2.78 m.	1.99 m.	1.44 m.	10.74 m.
3766	814	775	800			
8.42 m.	1.49 m.	3.37 m.	3.28 m.			

Разработка: Мария Тодорова - [e-levron.com](http://e-levron.com), [gobelins.dir.bg](http://gobelins.dir.bg)

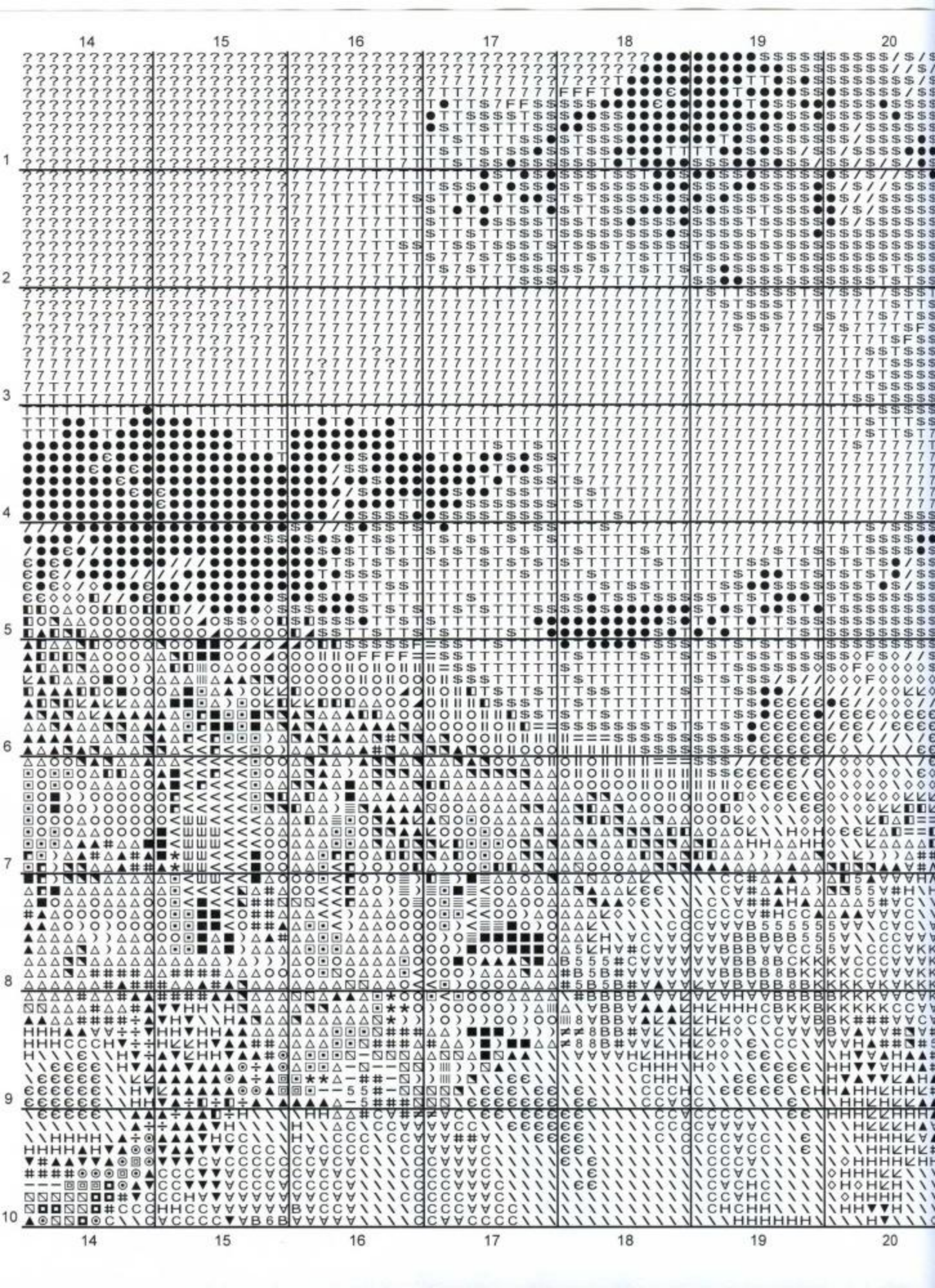












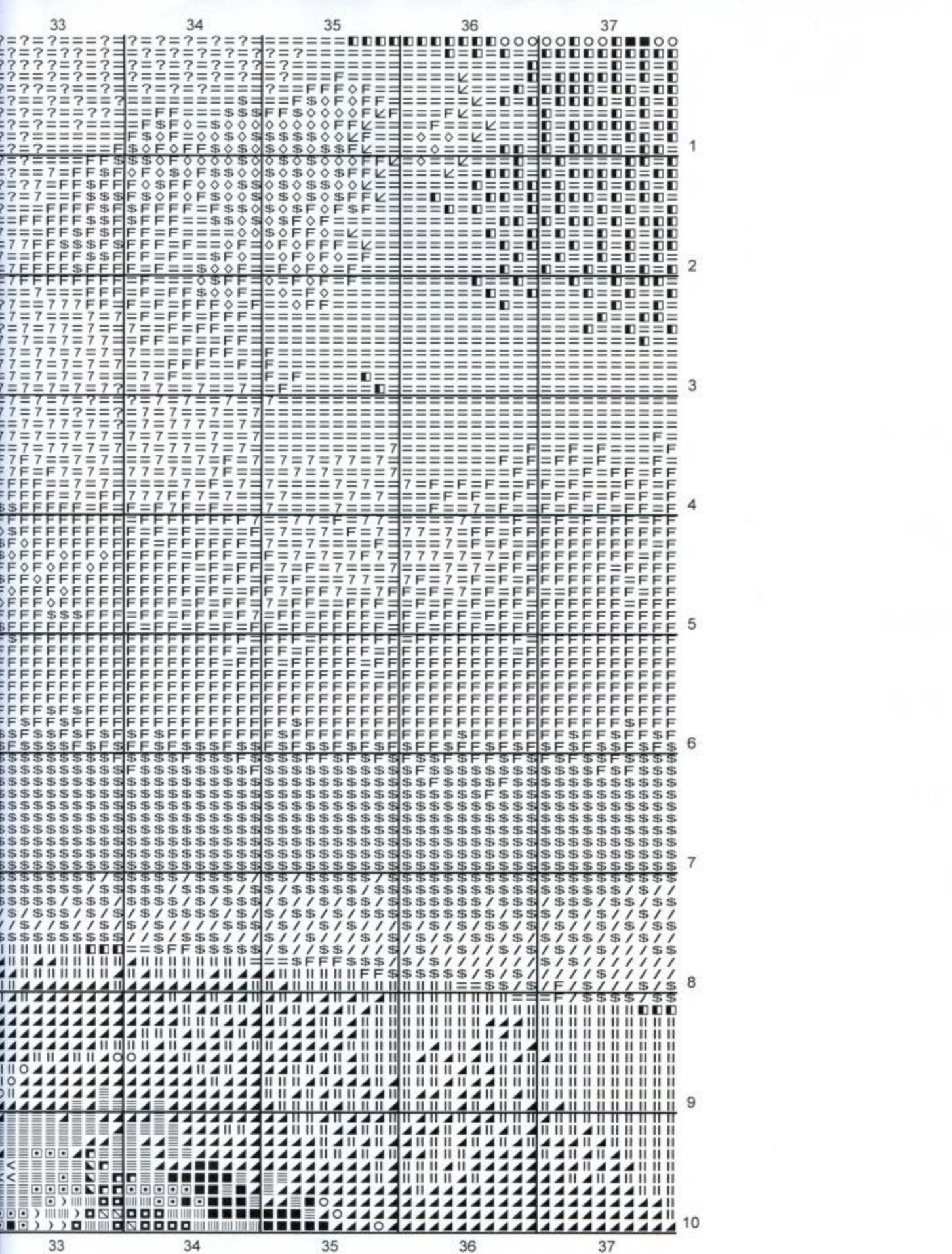


20	21	22	23	24	25	26
1	1	1	1	1	1	1
2	2	2	2	2	2	2
3	3	3	3	3	3	3
4	4	4	4	4	4	4
5	5	5	5	5	5	5
6	6	6	6	6	6	6
7	7	7	7	7	7	7
8	8	8	8	8	8	8
9	9	9	9	9	9	9
10	10	10	10	10	10	10



	27	28	29	30	31	32	33
1	???	???	???	???	???	???	???
2	???	???	???	???	???	???	???
3	???	???	???	???	???	???	???
4	???	???	???	???	???	???	???
5	???	???	???	???	???	???	???
6	???	???	???	???	???	???	???
7	???	???	???	???	???	???	???
8	???	???	???	???	???	???	???
9	???	???	???	???	???	???	???
10	???	???	???	???	???	???	???

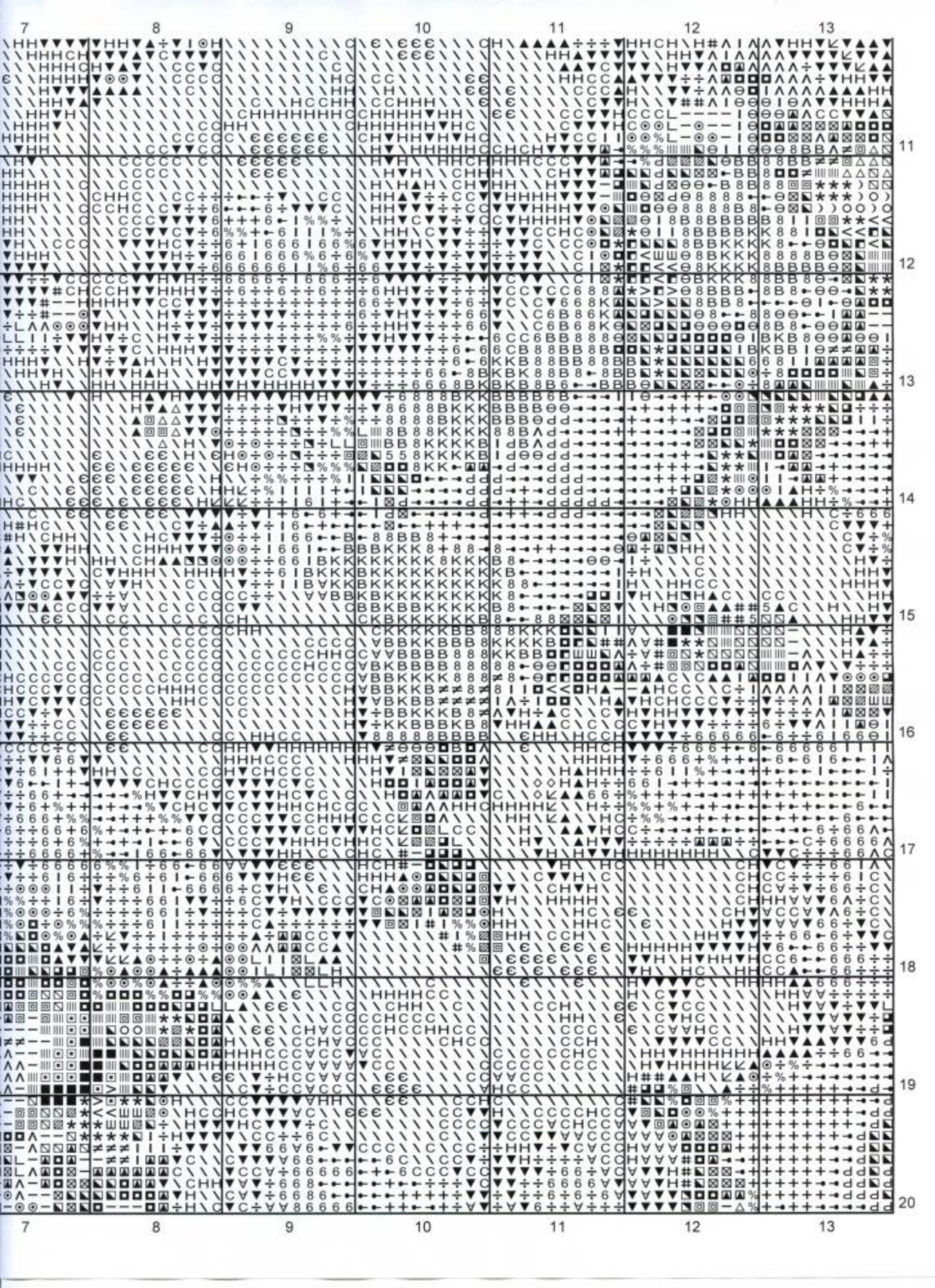




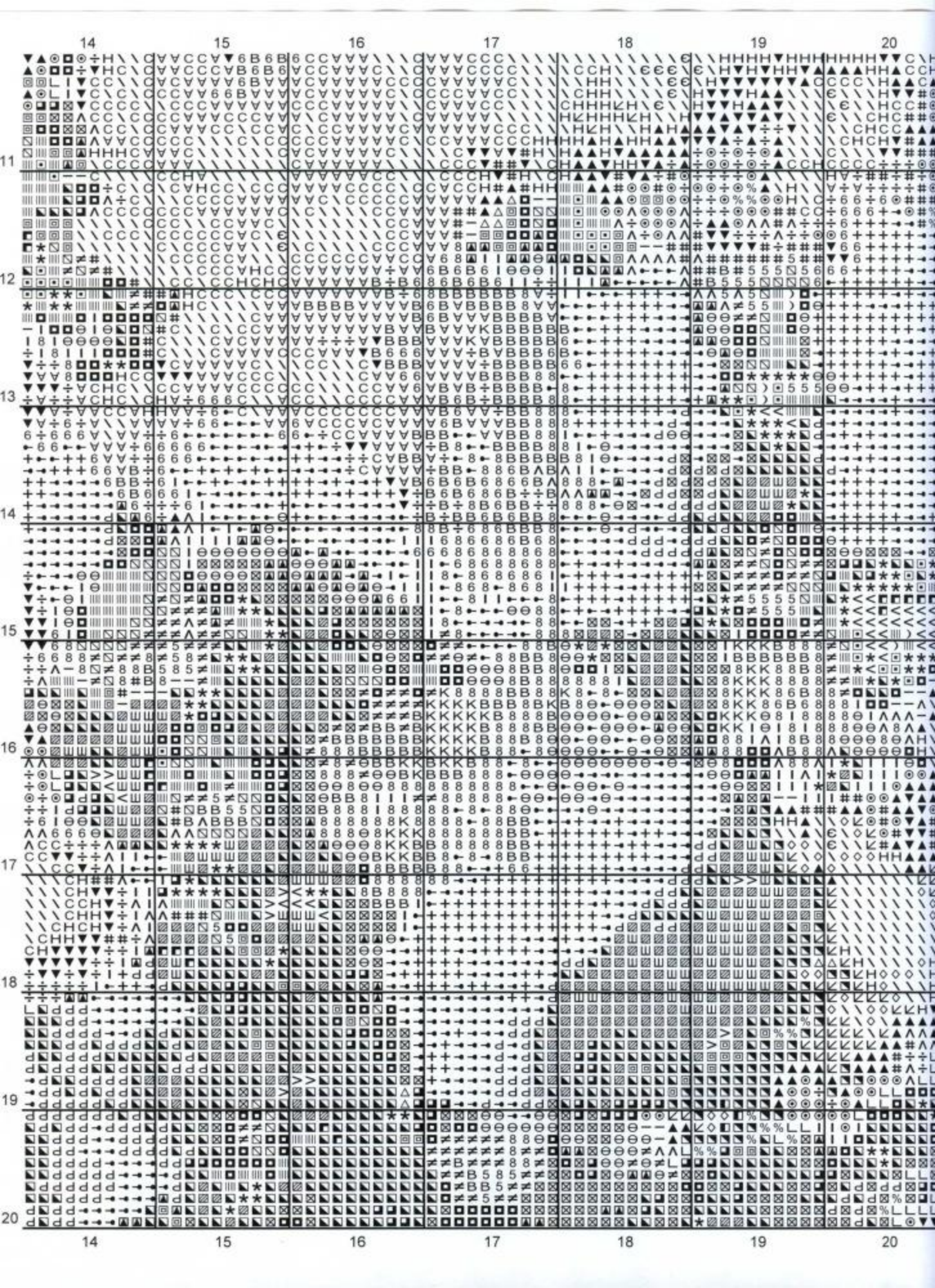


	1	2	3	4	5	6	7
11							
12							
13							
14							
15							
16							
17							
18							
19							
20							
	1	2	3	4	5	6	7

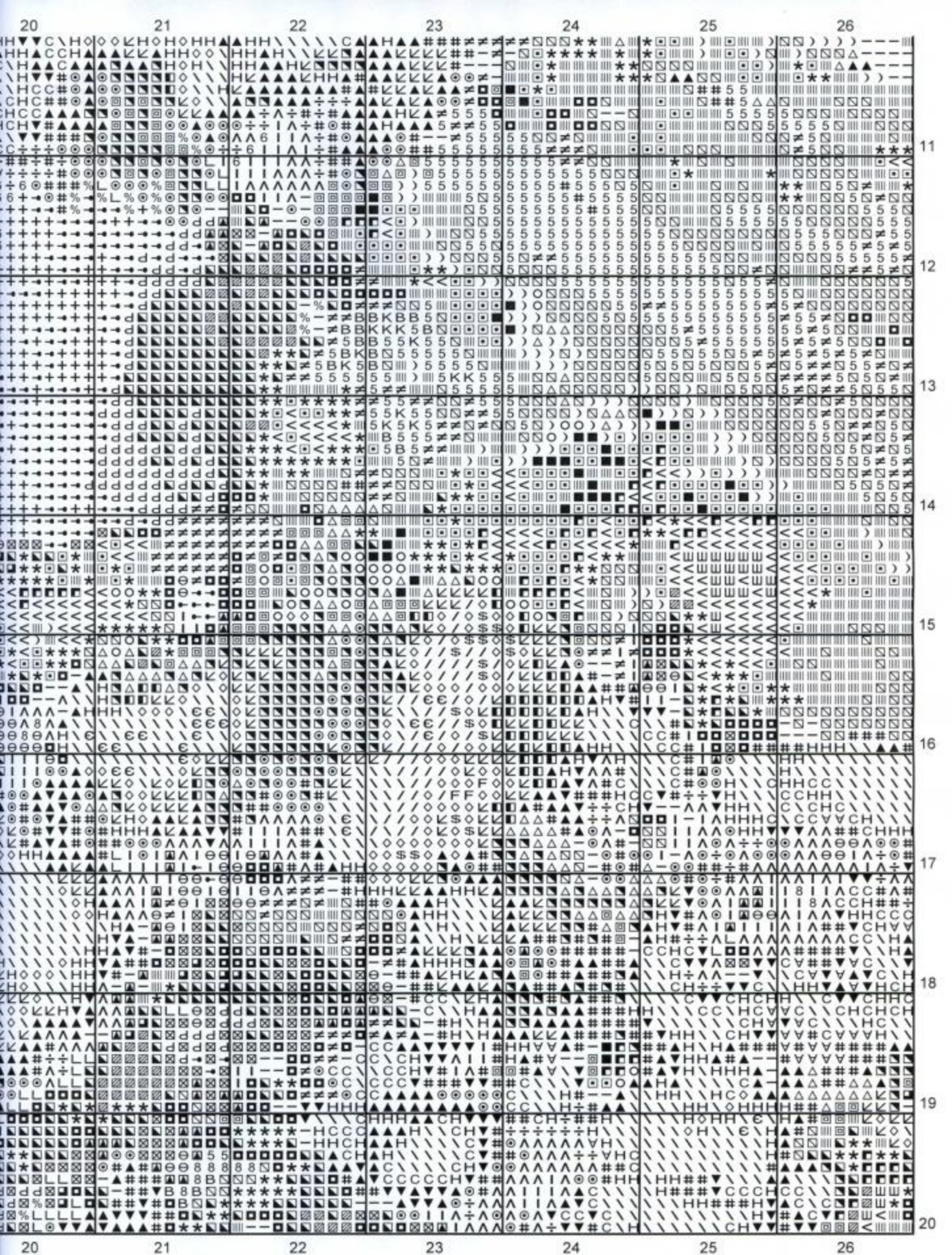








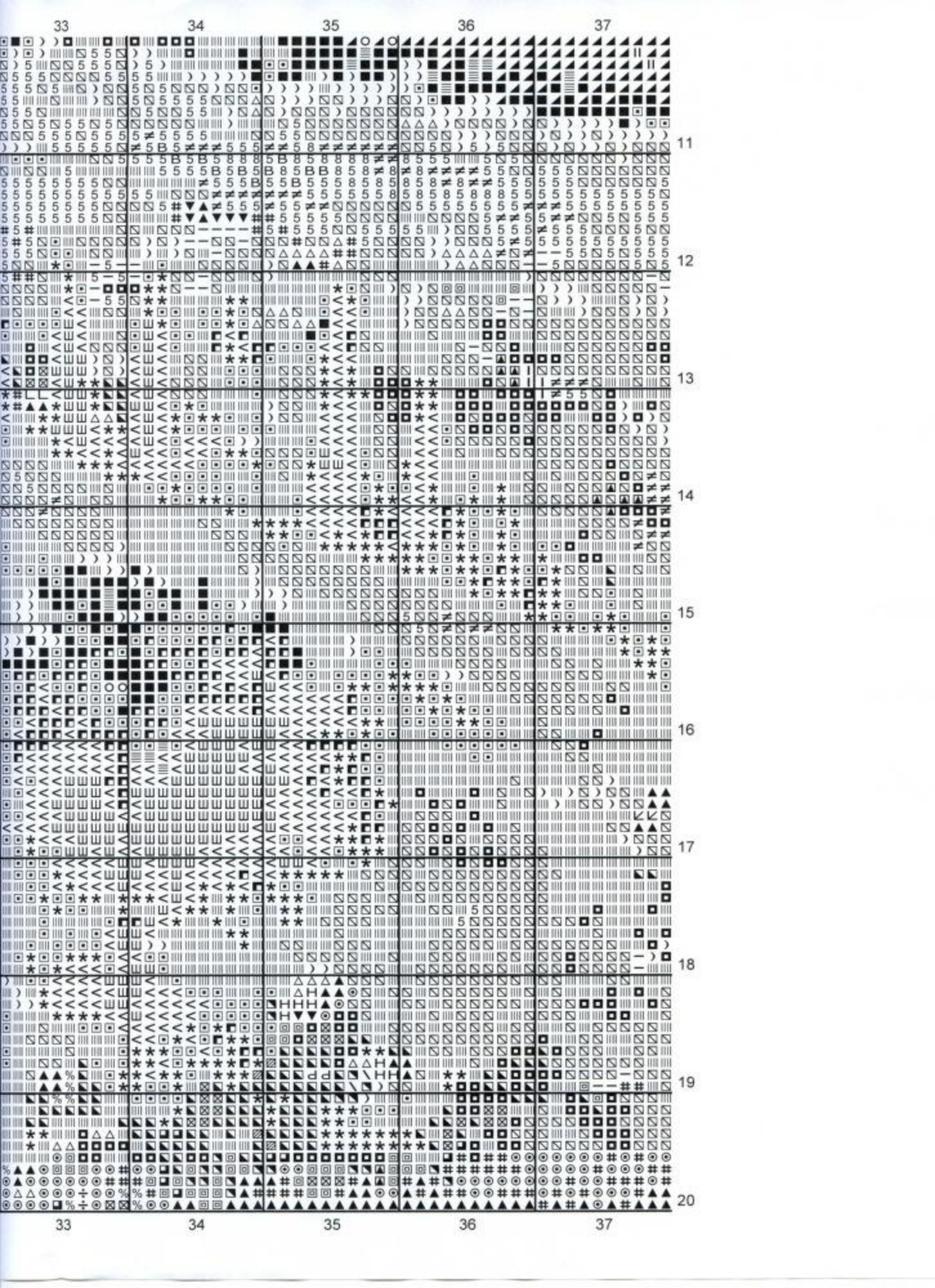






[illegible]







The image displays a 6x7 grid of 42 small images, each containing a different pattern of symbols and characters. The grid is labeled with numbers 1 through 7 at the top and bottom, and 21 through 26 on the left side. The patterns are complex and varied, featuring a mix of letters, numbers, and symbols. The symbols include various characters from different alphabets, punctuation marks, and special characters, arranged in a way that creates a dense, textured appearance. The patterns are not random but seem to follow a specific, though complex, logic or sequence. The overall effect is a highly detailed and intricate visual representation of a large dataset of symbols.



7							8							9							10							11							12							13						
-1-0-1																																																



